



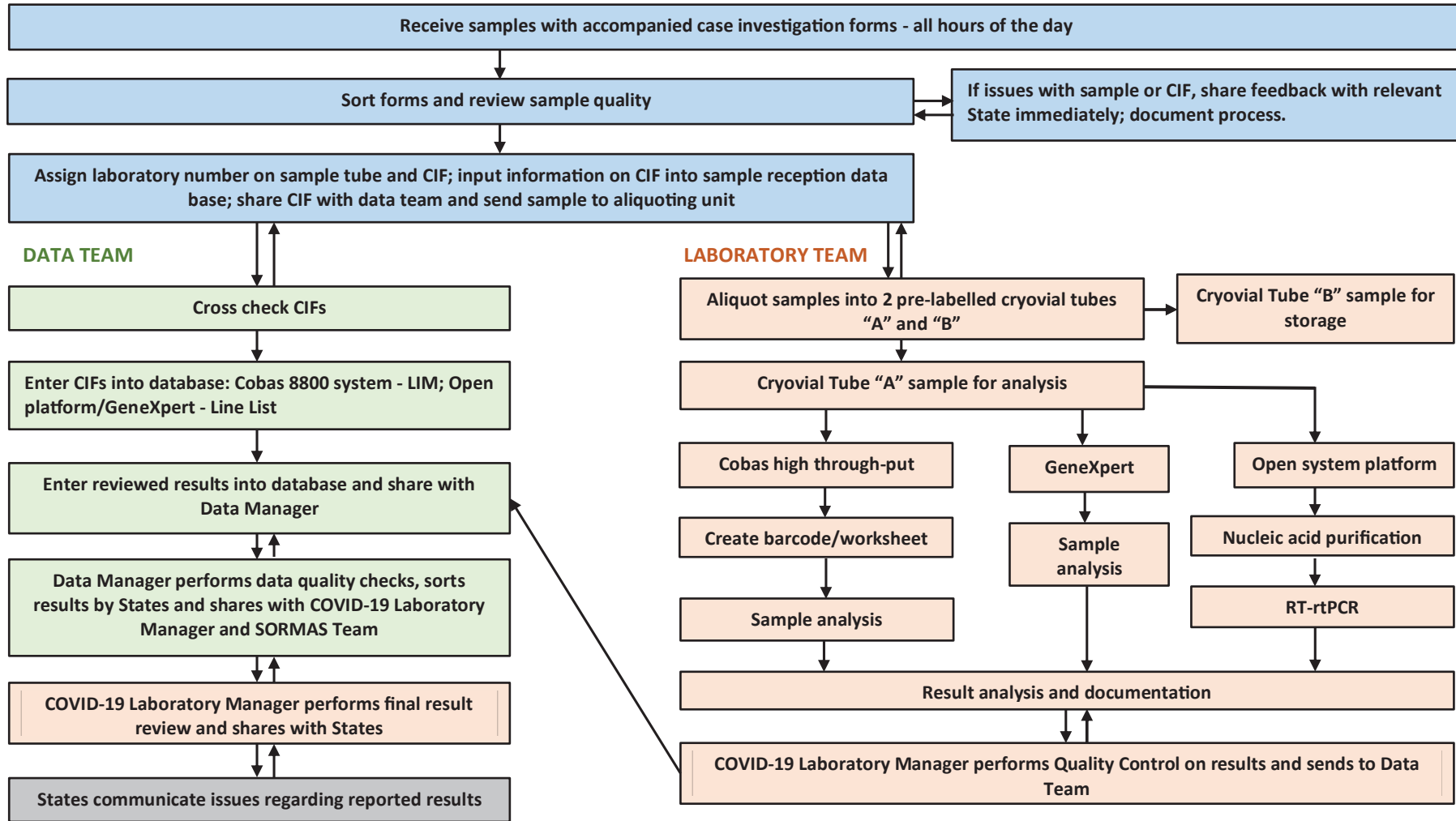
## **Schematic Flow for Receiving and Processing Suspected Sars-CoV-2 Specimens and Result Reporting at the National Reference Laboratory Gaduwa, Abuja Nigeria**

### **List of abbreviations**

CIF	Case investigation form
LIMS	Laboratory Information Management System
SORMAS	Surveillance Outbreak Response Management and Analysis System
RT-rtPCR	Reverse Transcription real-time Polymerase Chain Reaction
SARS-CoV-2	Severe Acute Respiratory Virus type 2
COVID-19	Corona Virus Disease 19



### SAMPLE RECEPTION



**Note: The Director of Laboratory Services NRL, oversees all processes of this workflow**